

# BMP<sup>®</sup>71

## LABEL PRINTER

**Thousands of Applications.**  
**Hundreds of Labels.**  
**One Label Printer.**

### Introducing the BMP<sup>®</sup>71 Label Printer - the one way to faster, easier label printing.

The BMP<sup>®</sup>71 combines the best features and functionalities of Brady's portable label printers into one easy-to-use, top-of-the-line solution. All your major wire & cable, safety & facility and asset & component identification needs are satisfied in one printer.

#### One Source for Label Materials

Choose from 30 different material types and over 400 label parts - all designed with Brady's industrial strength durability. Add all of the materials from the BMP<sup>®</sup>61 and the HandiMark<sup>®</sup> Portable Label Maker and your label options are endless!

#### Saves Time with Foolproof Label Design & High Speed Print

At 38mm per second, the BMP<sup>®</sup>71 printer has one of the fastest print speed on the portable printer market. But that's not all. With built-in design wizards for electrical, voice / datacomm and general ID, material recognition technology and storage space for over 100,000 label files, this printer can cut label design time in half.

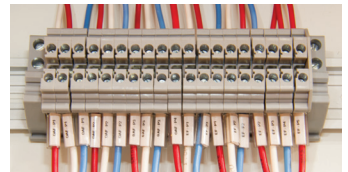
#### Cuts Material Waste - Preview Labels As You Create Them!

With a large, full colour graphical display, the BMP<sup>®</sup>71 printer shows you exactly what your label will look like as you're creating it - so there's no guesswork or need for "test labels".

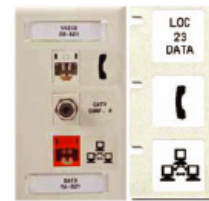
For demo videos and information on label and ribbon materials, visit [www.bradyid.com.au/bmp71](http://www.bradyid.com.au/bmp71)



**SAFETY & FACILITY ID**



**DURASLEEVE™ LABELS**



**DIE CUT LABELS**



**CONTROL PANNEL LABELS**



**PIPE MARKERS**



**GLOW IN THE DARK TAPE**

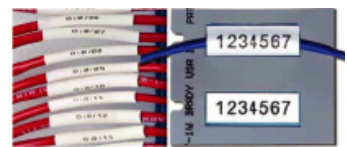


## BMP®71 Printer features include:

- ▶ Large, full colour graphical display shows:
  - Label material and ribbon part number
  - Label colour and size, including the amount of remaining material
  - Font size, bold, italics, underline, subscripts and more
  - Application templates
  - Multi-area print areas
  - Remaining battery charge
- ▶ Hundreds of symbols and graphics including barcodes
- ▶ Multiple font sizes and auto font size
- ▶ Frame, mirror print and vertical print
- ▶ Sequences and time/date stamp



**SELF LAMINATING LABELS**



**PERMASTLEEVE™  
HEAT-SHRINK SLEEVES**

Use with **Brady Workstation Safety Facility Identification (SFID) Suite Software** for additional graphics and templates for signs, labels, pipe markers and tags - perfect for 5S, TPM and lean visuals.

Use with **Brady Workstation Product & Wire Identification (PWID) Suite Software** to create labels for asset ID, component marking, voice / datacomm labelling, wire markers and more.

For demo videos and information on label and ribbon materials, visit [www.bradyid.com.au/bmp71](http://www.bradyid.com.au/bmp71)

PART NO.	DESCRIPTION
115158	BMP71 Printer* with Workstation PWID Suite
872044	BMP71 Printer* with Workstation SFID Suite
114881	Hard case
150619	Soft case
871843	AC adaptor
871844	Quick charger
114885	Battery
114886	Cleaning kit
147998	TLS/Handimark Media Adaptor
103788	USB Cable



\*Label printer ships with Software, Hardcase, Charger/AC Adapter, 1 Roll of M71-31-423 White Die Cut Labels, 1 R6000 Black Ribbon Cartridge, Roll Adapter, USB Cable, Quickstart Guide, a CD including the Printer Driver, Users Guide and Tutorial.

© 2021 Brady Australia Pty Ltd. All Rights Reserved.

